

Nikon

Windows XP Home Edition / Windows XP Professional

DI Series

This manual is for those users of DI Series cameras who are running Nikon View 4 (Version 4.3.1) under Windows XP Home Edition / Professional.

Installing Nikon View 4

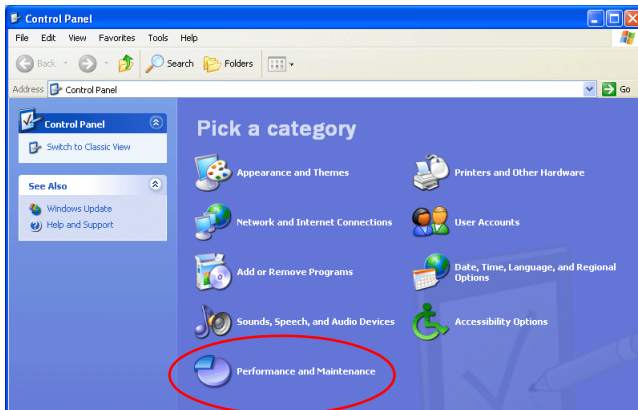
Follow the installer instructions to install Nikon View 4.

Device Registration

The camera must be registered as a hardware device when it is connected to the computer for the first time.

Step 1

Before registering the camera, confirm that your OHCI-compliant IEEE 1394 interface board or card has been correctly registered with the system. Select **Control Panel** from the **Start** menu to display the window shown below. Click **Performance and Maintenance**.

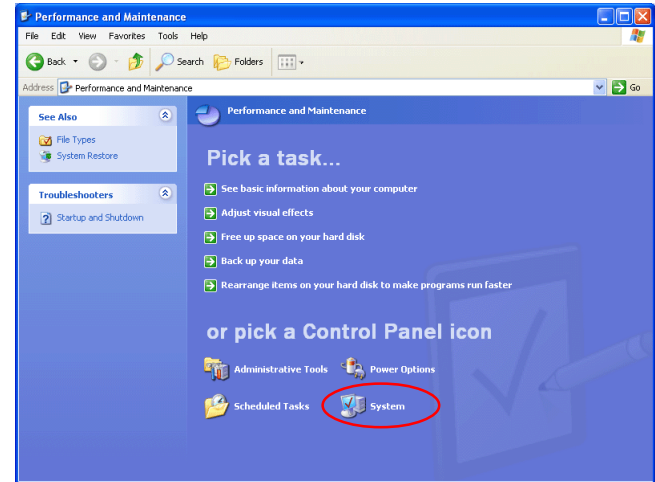


Log On

You will need to log on as the "Computer Administrator" when installing, uninstalling and using Nikon View 4.

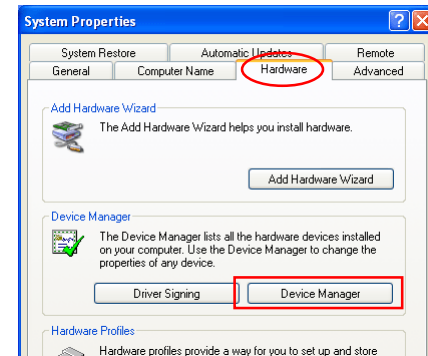
Step 2

Click **System** to open the System Properties window.



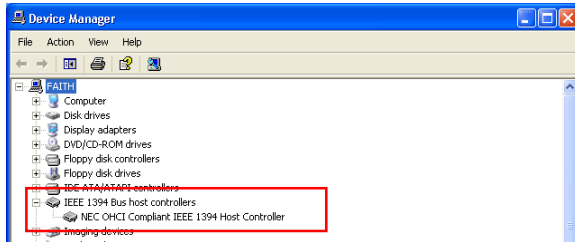
Step 3

Select the **Hardware** tab and click the **Device Manager** button.



Step 4

If your OHCI-compliant IEEE 1394 interface board or card has been correctly registered with the system, the bus controller for your IEEE 1394 board or card should be listed under “1394 Bus Host Controller”. If “1394 Bus Host Controller” is not listed in the Device Manager, or if your IEEE 1394 interface board or card is listed as an unknown or miscellaneous device or is preceded by a red or yellow warning icon, follow the instructions in the manual provided with the board to ensure that the drivers are properly installed.



Step 5

Turn on the DI (DIx/DI_H), make sure that the mode dial is set to PC, and then connect the camera to the computer using an IEEE 1394 cable.

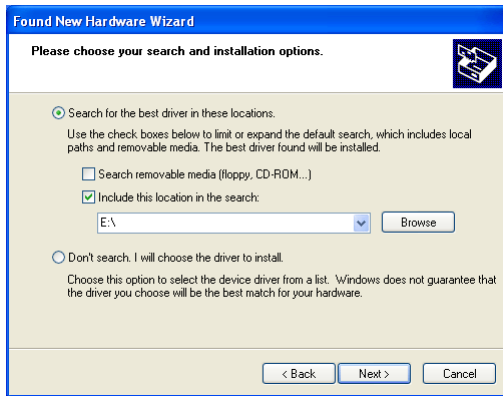
Step 6

The “Found New Hardware Wizard” will be displayed. Confirm that “Install driver from a list or specified location” is selected and click **Next**. If the “Found New Hardware Wizard” dialog does not appear, click [here](#) to refer to *Reinstalling the Device Drivers* (page xp-5)

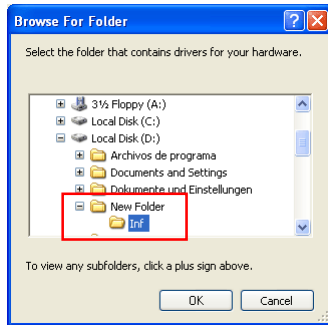


Step 7

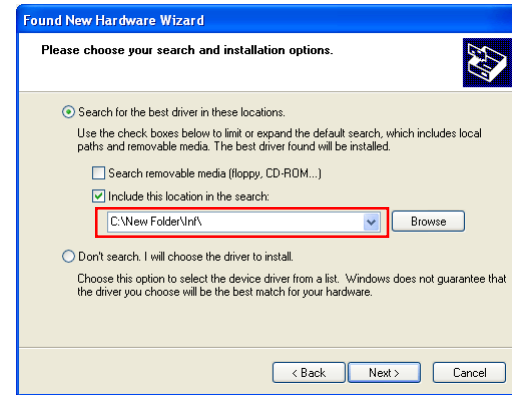
The dialog shown below will be displayed. Select “Search for the best driver in these location” then click “Including this location in the search” then click “Including this location in the search”



If the downloaded folder is labelled “New Folder”, click the **Browse** button, and select “C:\New Folder\Inf”.

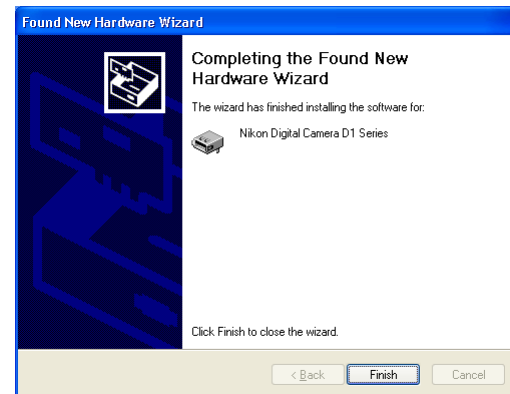


Click **OK**; the dialog shown below will be displayed.



Step 8

When the driver installation has been completed, the dialog shown below will be displayed; click **Finish** to close the wizard.




Step 9

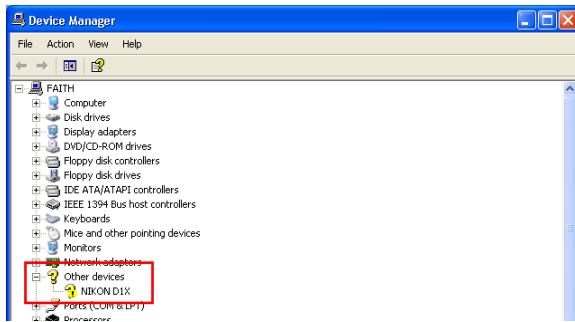
Once registration is complete, check that the DI (DI \times /DI H) has been correctly registered with the system.

Open the Device Manager as instructed in Steps 1-3. The Device Manager will be displayed. After confirming that “Nikon I394 Protocol Device” is listed in the Device Manager, click the “+” sign to its left



If “Nikon I394 Protocol Device” does not appear

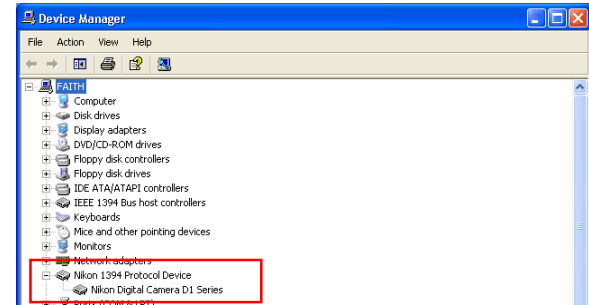
If “NIKON DI \times (DI/DI H)” is listed under “Other Devices”, click here  and reinstall the device drivers.



If “Nikon I394 Protocol Device” is not listed in the Device Manager and “NIKON DI \times (DI/DI H)” is not listed under Other Devices, re-start your computer and return to **Step 6**.

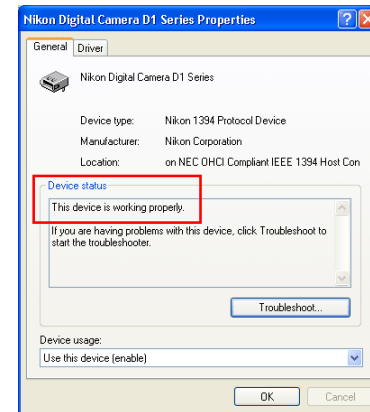
Step 10

After confirming that “Nikon Digital Camera DI Series” is listed under “Nikon I394 Protocol Device,” double-click the listing to open the Properties window.



Step 11

The Nikon Digital Camera DI Series Properties dialog will be displayed. Click the General tab and confirm that “This device is working properly” appears under “Device status”. Click **OK**.



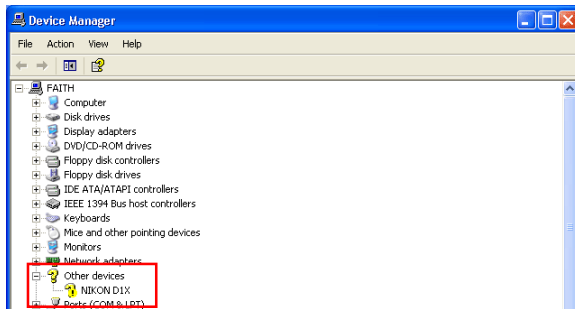
Close the Device Manager, then click **OK** to close the System Properties window. Device registration is now complete.

Reinstalling the Device Drivers

If “Nikon D1 (D1x/D1H)” is listed under “Other Devices”, or if the “Found New Hardware Wizard” failed to appear when you connected the camera to the computer, follow the steps below to reinstall the camera drivers.

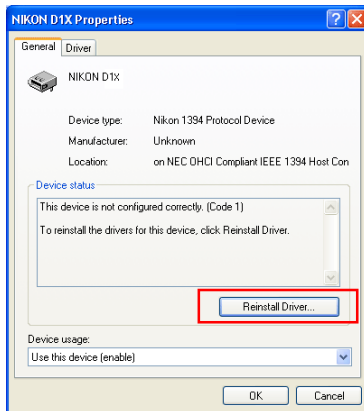
Step 1

Open the Device Manager (as explained in Steps 1-3) and double-click the listing for the “Nikon D1/D1x/D1H” that appears under “Other devices” or “Miscellaneous Devices.”



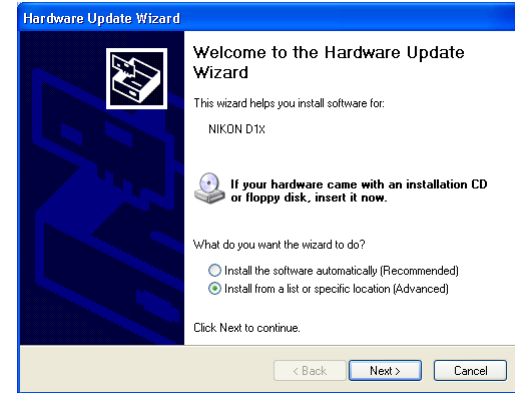
Step 2

The Properties window will be displayed. Open the General tab and click **Reinstall Driver**.



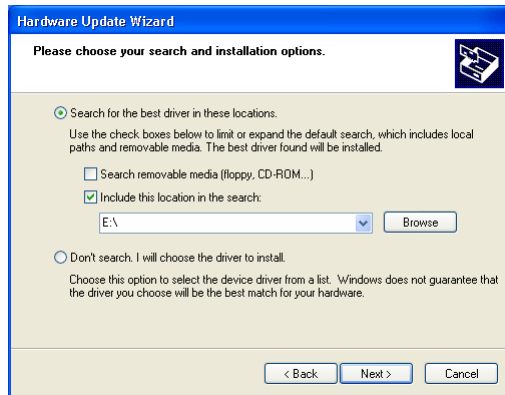
Step 3

The Windows Update Device Driver Wizard will be displayed. Confirm that “Install from a list or specific location” is selected and click **Next**.

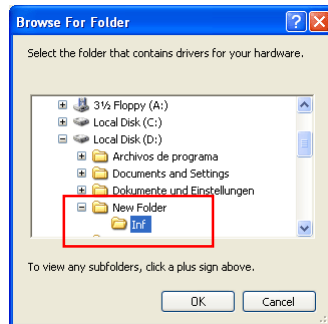


Step 4

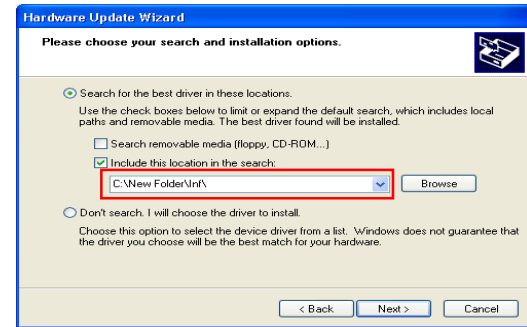
The dialog shown below will be displayed. Select “Search for the best driver in these locations.” then click “Including this location in the search.” then click “Including this location in the search.”



If the downloaded folder is labelled “New Folder”, click the **Browse** button, and select “C:\New Folder\Inf”.

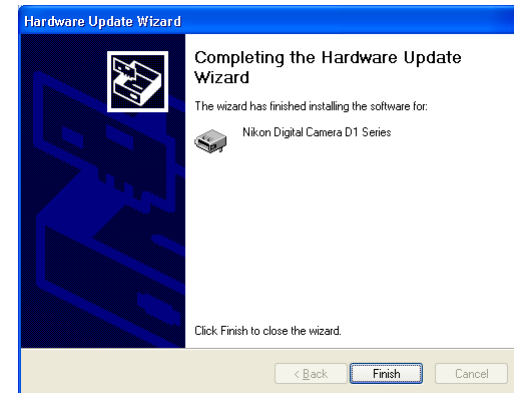


Click **OK**; the dialog shown below will be displayed.



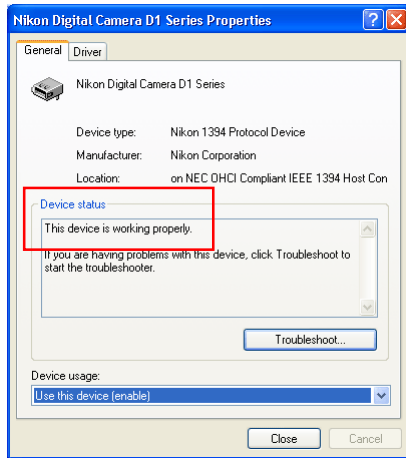
Step 5

When the driver installation has been completed, the dialog shown below will be displayed; click **Finish** to close the wizard.



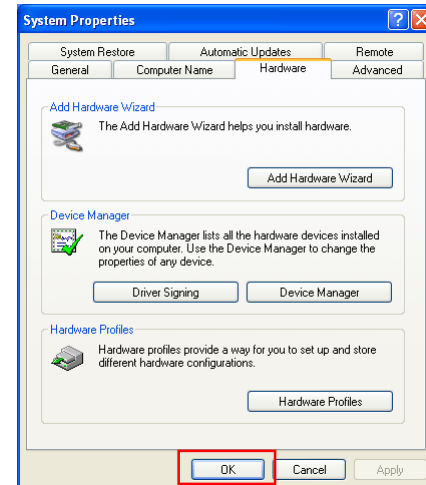
Step 6

Return to the Properties window (which was opened in Step 1-2) and click the General tab to confirm that “This device is working properly” appears under “Device status.” Click **OK**.



Step 7

Close the Device Manager, then click **OK** to close the System Properties window.



Starting Nikon View 4

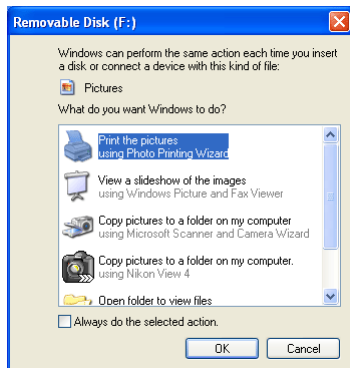
Using a DI Series Camera

Nikon View will start automatically when a camera is connected to the computer using an IEEE1394 cable, and turned on.



Using a card reader/card slot

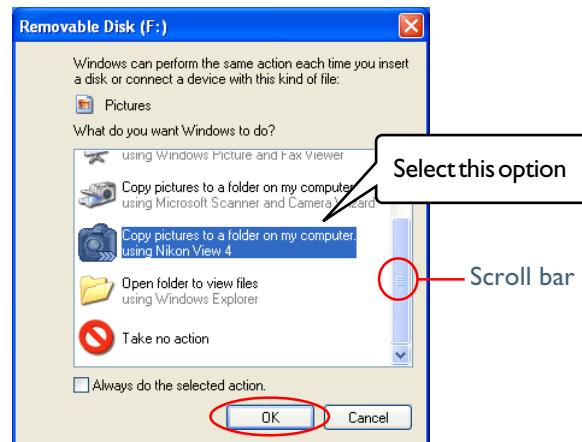
The Removable Disk (AutoPlay) window will be displayed when a memory card from a Nikon digital camera is inserted in a card reader or PC card slot.



Copying NEF Files to the computer.

NEF files can not be copied to the computer using the Copy pictures to a folder on my computer using Microsoft Scanner and Camera Wizard option.

To start Nikon View 4, select **Copy pictures to a folder on my computer using Nikon View 4** from the options listed in the Removable Disk window and click OK. If **Copy pictures to a folder on my computer using Nikon View 4** is not visible, drag the scroll bar until the Nikon View 4 option is displayed.

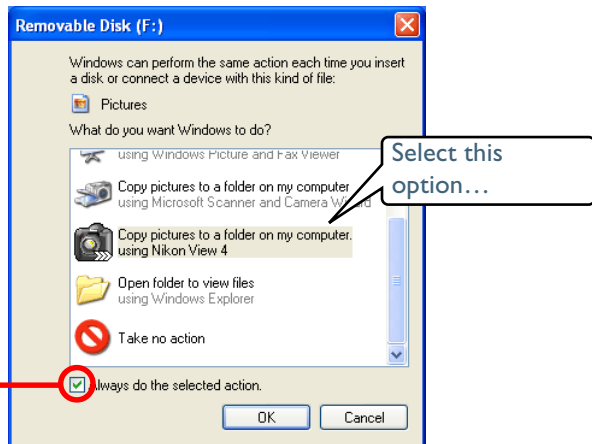


Click OK to start Nikon View 4



Starting Nikon View 4 Without AutoPlay

To prevent the AutoPlay window from opening every time the camera is connected and turned on, select **Copy pictures to a folder on my computer using Nikon View 4** and then check **Always do the selected action** before clicking **OK**.



The next time the camera is connected and turned on, the AutoPlay window will not be displayed; instead, Nikon View 4 will start automatically.



The Preferences Auto launch Tab

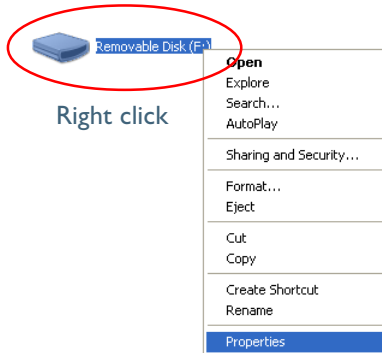
If **Always do the selected action** is checked when **Copy pictures to a folder on my computer using Nikon View 4** is selected, Nikon View 4 will start automatically when a memory card from a Nikon digital camera is inserted in a card reader or PC card slot, even if **Disable Auto Launch** is selected in the Auto Start tab of the Nikon View 4 Preferences dialog.

Memory Cards from Other Makes of Camera

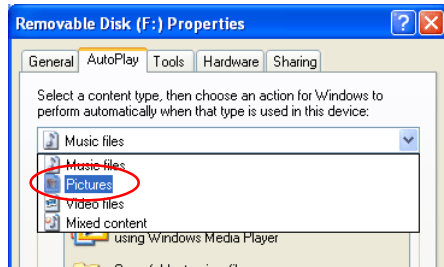
If the AutoPlay window is displayed when you insert a memory card from a non-Nikon camera in a card reader, do not check Always do the selected action.

Displaying the AutoPlay Window

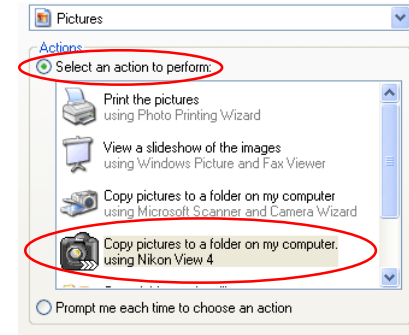
To display the AutoPlay window after selecting **Always do the selected action**, insert a memory card from a Nikon digital camera into a card reader or PC card slot and select **My Computer** from the **Start** menu. Click on the removable disk corresponding to a memory card with the right mouse button and select **Properties** from the menu that appears.



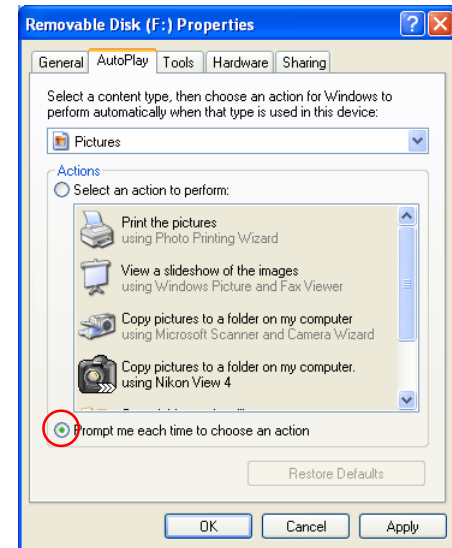
The Removable Disk Properties dialog will be displayed. Open the AutoPlay tab and select **Pictures** from the list of content types.



A list of actions will be displayed with **Copy pictures to a folder on my computer using Nikon View 4** selected.



Check **Prompt me each time to choose an action**.

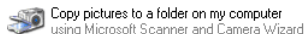


Click **OK** to close the Removable Disk Properties dialog.

AutoPlay Options

This section outlines the options displayed in the AutoPlay window, when a memory card from a Nikon digital camera is inserted into a card reader or PC card slot. Refer to Windows XP help and support services for more information.

- **Copy Pictures to a folder on my computer using Microsoft Scanner and Camera Wizard**



Clicking **OK** in the AutoPlay window when this option is selected will display the Scanner and Camera Wizard, where you can transfer pictures to your computer. This option can also be used to share pictures via the Internet and order prints on-line.

- **Print the pictures using Photo Printing Wizard**



This option opens the Photo Printing Wizard, where you can print pictures with the help of a wizard.

- **View a slideshow of the images using Windows Picture and Fax Viewer**

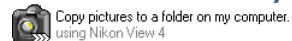


When this option is selected, the pictures on the memory card will be displayed as a slide show.

NEF Files

The **Copy Pictures to a folder on my computer using Microsoft Scanner and Camera Wizard**, **Print the pictures using Photo Printing Wizard**, and **View a slideshow of the images using Windows Picture and Fax Viewer** options in the Windows XP AutoPlay window do not support NEF files.

- **Copy pictures to a folder on my computer using Nikon View 4**



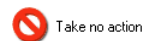
Nikon View 4 will start and the Image Transfer or Thumbnail List window will be displayed.

- **Open folder to view files using Windows Explorer**



This option starts Windows Explorer, where you can navigate through the files and folders on the camera memory card. The camera or memory card will be shown as a removable disk.

- **Take no action**



None of the actions available in the AutoPlay window are performed; the camera or memory card functions as a removable disk only.